

Calgary Aggregate Recycling (CAR)

Circulation Routes & Operation Locations



Materials Drop-Off & Storage

- A - Accepted materials are proposed to be brought on-site in dump trucks through a new entrance from 60 Street SE and proceeding along the south edge of the property (green route).
- B - Incoming materials are weighed at the scale.
- C - After weighing, the trucks either proceed with soil to the unloading area for the stockpile (orange route), or hydro-vac trucks unload directly to the feeder (blue route to the Feeder & Pre-screening E).
- D - After unloading, empty trucks proceed back along their path of origin to exit along the south and east edges of the property back on to 60 Street SE.

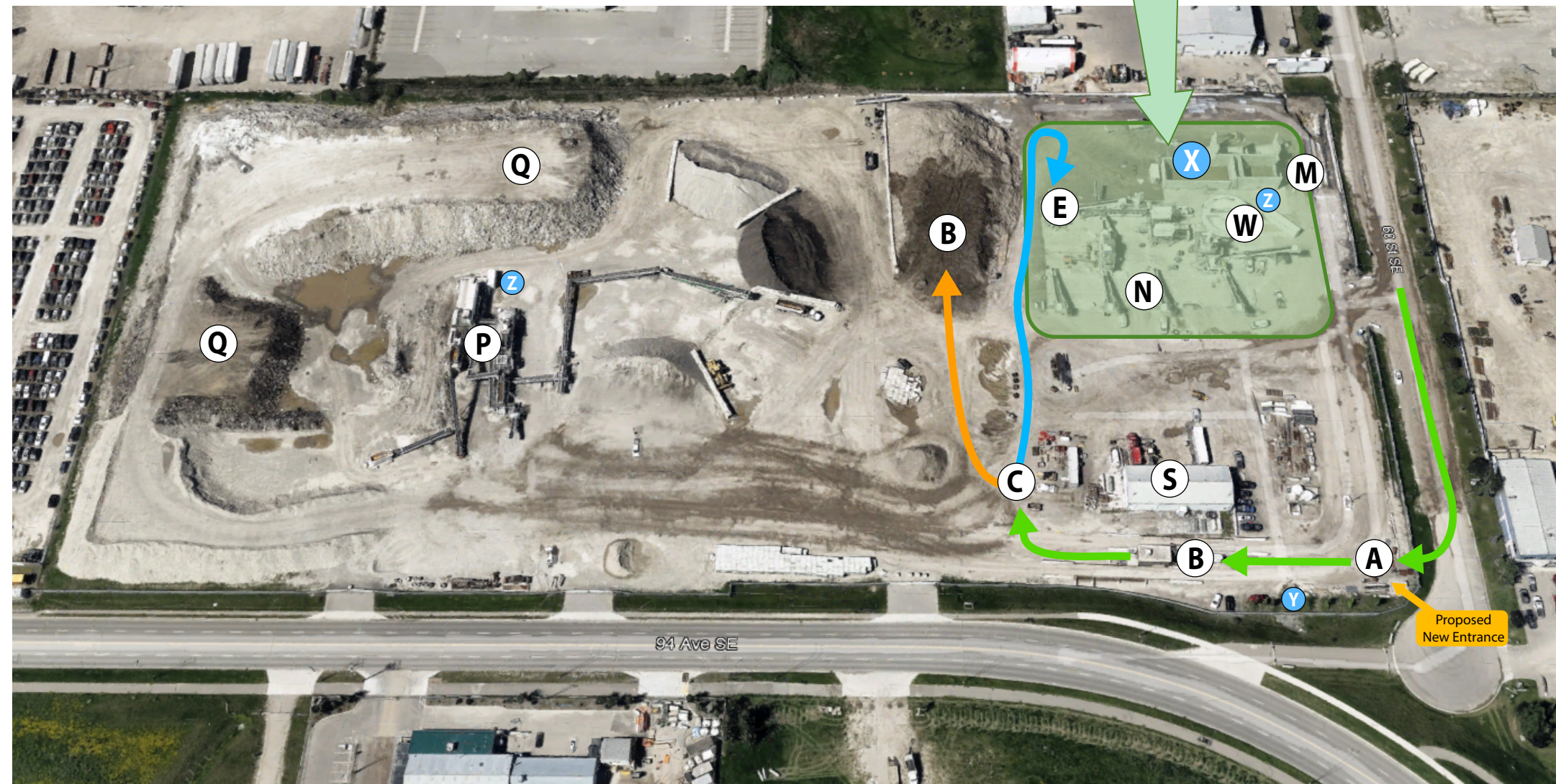
Soil Recycling Facility

Details of the Soil Recycling Facility (E through L) are documented on the following page.



Outputs

- M – Fines cakes are generated from the Plate Press Filtration System (K) and tested prior to delivery to GeoCycle for use in concrete (100% in 2023), or to a Class II Landfill. Uses for this output are being explored to replace interrupted processing by GeoCycle in 2024. In 2024, 75% of the cakes were sent to landfill.
- N - Sand and aggregates are stored on-site and sold for landscaping, road maintenance, construction, and other uses.
- W – Recycled water from the Soil Recycling Facility is reused within the system or utilized by hydro-vac vendors for further hydro-vac operations. Surface groundwater from the concrete operations pad is also collected from the site by a liner beneath the concrete. The operational pad is roughly the same area as the green highlighted area on the map to the left.



- X - A 600,000 litre water storage tank holds recycled process water and storm water collected on the site for use in the operations of the facility.
- Y - Storm water discharge location (used once in 2023 under a Site Drainage Application due to extra overland water collected). No discharge events occurred in 2024.
- Z - 400 bbl (18,000 gal) water tanks to store additional water (purchased since discharge event in 2023).

Additional Operations

- P – Aggregate crushing machinery is used to refine materials to targeted aggregate sizes.
- Q – Input stockpiles for crushing including crushed concrete, recycled asphalt, drain rock and road crush.
- S - The shop is where employees gather for safety meetings, lunch, washrooms, and location of fire extinguisher and first aid kit.